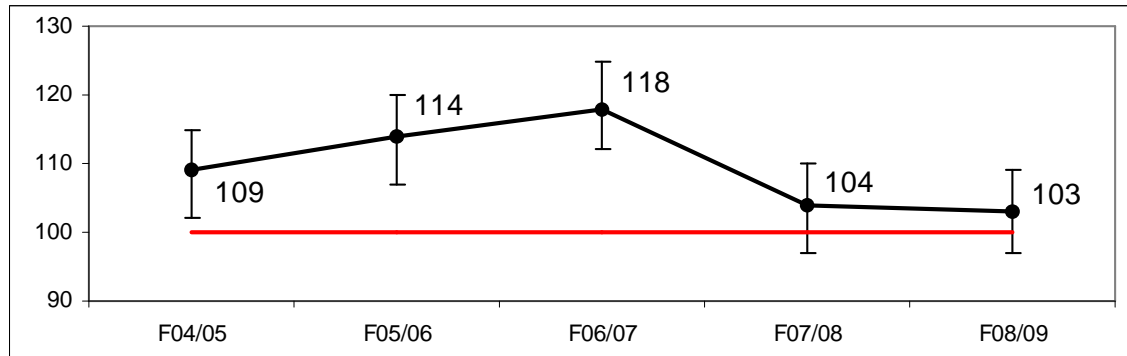


Hospital standardized mortality ratios (HSMR) results for LHSC

LHSC Values for HSMR



Note: the drop in HSMR value from F06/07 to F07/08 is primarily due to changes in how palliative care cases were counted at LHSC.

On Dec. 10, 2009 the Canadian Institute for Health Information released the hospital standardized mortality ratio (HSMR) results for acute care hospitals across Canada.

London Health Sciences Centre's HSMR for 2008/2009 is 103 with a confidence interval (shown by the vertical bar in the graph above) that crosses 100. This suggests that the HSMR is not statistically different from the overall average.*

How is the HSMR calculated?

The HSMR is calculated as a ratio of the number of *actual* deaths to the number of statistically *expected* deaths in acute care hospitals. The HSMR is based on diagnosis groups that account for about 80 per cent of in-hospital deaths in Canada. The HSMR is adjusted for various factors that may influence in-hospital mortality, such as patient demographics, co-morbidities, diagnosis and how the patient arrived at the hospital.

**HSMR values are estimated to be accurate within the upper and lower confidence interval, 19 times out of 20 (95% confidence interval).*