

**To our Patients and their Families:**

We will work with you to improve your health and to provide compassionate and high quality care.

**To the People of London and Middlesex:**

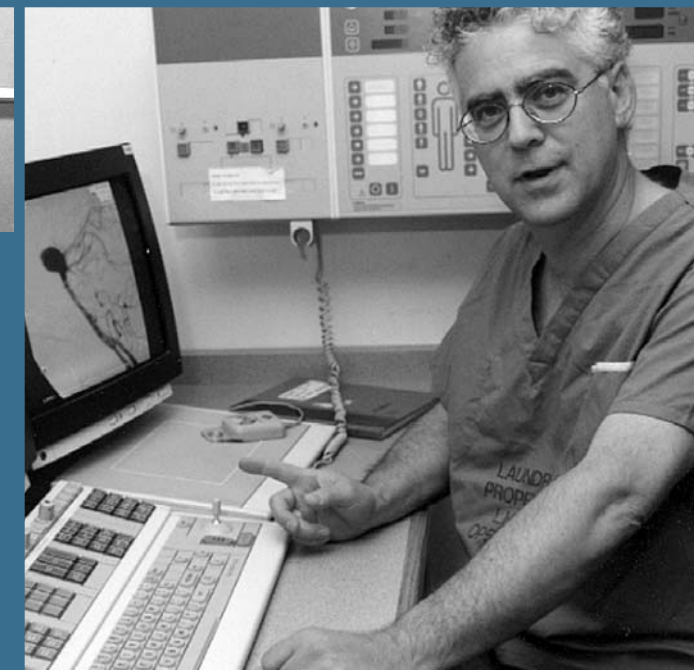
We will, in partnership, facilitate the provision of quality health care services for all age groups.

**To the People of Southwestern Ontario and Beyond:**

We will offer quality health services for those conditions or circumstances requiring our specialized care.

**To Our Employees, Physicians, and Volunteers:**

We will attract and retain the best people. We will provide a safe and healthy environment that inspires teamwork, respect for the individual, collaboration, and professional development.



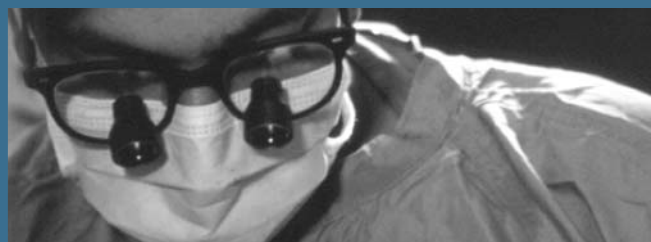
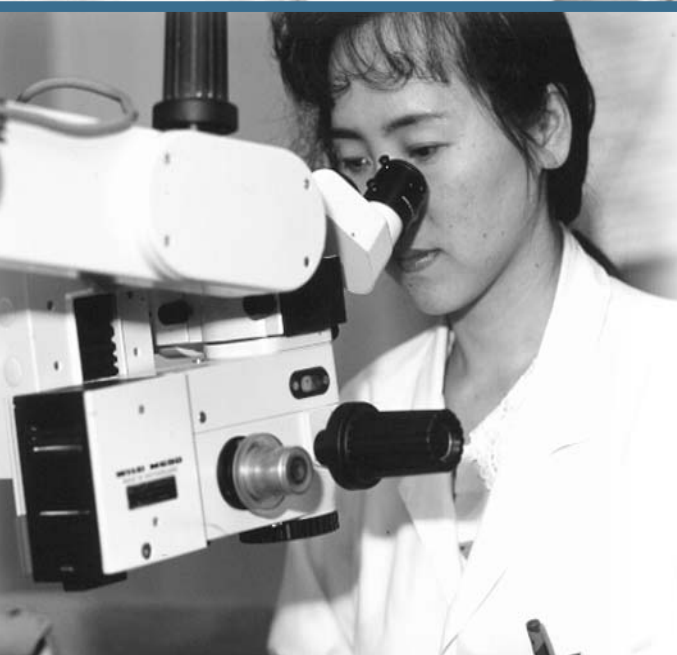
**London Health Sciences Centre**

**OUR MISSION**

*Together we care, we learn, we discover*

London Health Sciences Centre, a university teaching hospital, is committed to improving health. Building on our tradition of leadership and partnership, we champion patient-centred care, a spirit of inquiry and discovery, and a commitment to life-long learning.

**To fulfill our Mission we make the following commitments...**



**To Our Researchers:**

We will, with our research partners, promote leadership, encourage innovation, advance scientific knowledge and its dissemination, and seek solutions to health issues through the provision of facilities and resources.

**To Our Health Care Partners and Referring Physicians:**

We will work with you, sharing expertise, information, and assistance, so that patients can be cared for in their own communities.

**To Those Who Entrust Us With the Stewardship of Resources:**

We will operate within our means. We will use our resources responsibly and ethically to provide cost-effective services. We will use external objective standards to measure our overall performance.

**To Our Students, Trainees, and Their Teachers:**

We will, in collaboration with our educational partners, foster learning and development opportunities through expert teaching and optimal resources and facilities.