

MASSIVE TRANSFUSION PROTOCOL (MTP)

Posted October 2010

REMINDERS:

LABS:

- » CBC (lavendar)
- » INR / PTT / fibrinogen (blue)
- » Blood gases + Calcium

OCTAPLEX (Prothrombin complex)

- » Consider for warfarin reversal

CRYOPRECIPITATE (1dose = 10units)

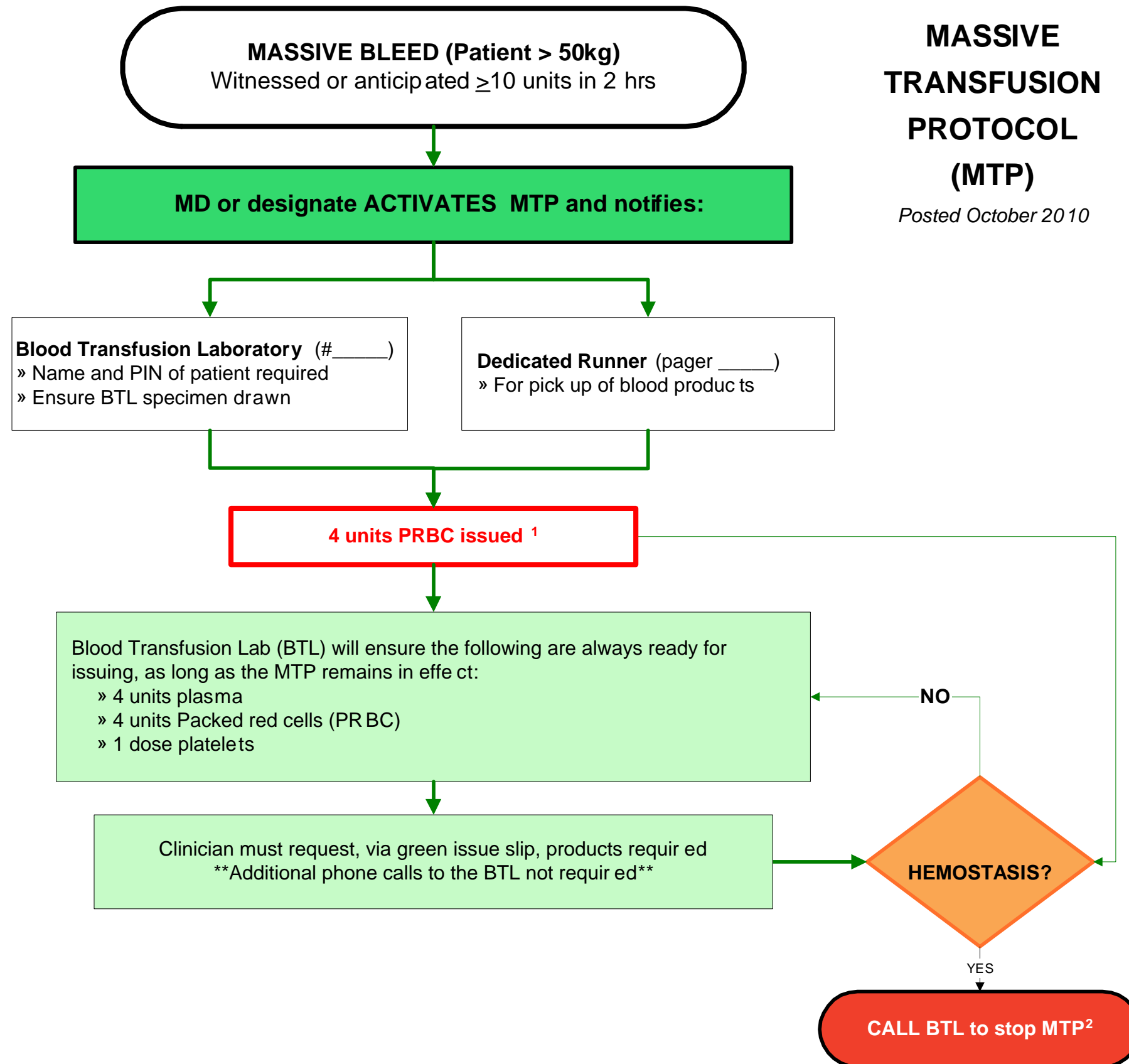
- » 4 plasma = 8u cryo = 2g fibrinogen
- » Consider cryo if fibrinogen trending to ward 1.0, and ongoing bleed.
- » Give cryo if fibrinogen < 1.0

Obstetric Bleed: think cryo early.

rFVIIa (Niasase):

- » Ongoing bleed: consider rFVIIa if platelets > 50, INR < 1.5, Fibrinogen > 1.0
- » **Thrombotic risks associated:** consult Hematology for second opinion (pager 1499 9)

Consider Cell Saver



¹ Uncrossmatched (O Neg or Group specific) or Crossmatched PRBC

² MTP will auto-stop if no products are issued in a 4 hour period.