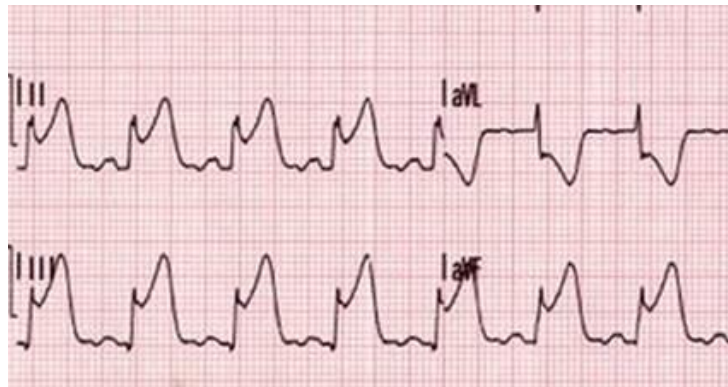


Join us for an interactive webinar on...

STEMI MIMICS

Date: February 13, 2017 | Time: 10:00-11:00 AM



BRIEF DESCRIPTION:

Join Mike Kennedy, Prehospital Care Specialist and Dr. Matt Davis, Local Medical Director for a STEMI mimics webinar.

ST elevation is a common ECG finding in patients with chest pain; however the majority of these patients are not experiencing an acute MI.

Differentiating between a true STEMI and a STEMI mimic is a challenge for all providers regardless of their environment.

This webinar will review the most common causes of ST elevation, provide suggestions to differentiate a STEMI from a mimic and will cover the following:

- Recognizing that ST elevation is a common ECG finding, but often not the result of an MI.
- Identifying the most common STEMI mimics and their prevalence
- Consideration of clinical and ECG interpretation techniques for identifying STEMI mimics'

[Click here to register](https://attendee.gotowebinar.com/register/3816251308502049795)

<https://attendee.gotowebinar.com/register/3816251308502049795>

When you register you will receive an email confirmation. This email will include instructions on how to join the webinar. Please be sure to check your junk mail folder if you don't receive the email shortly.

[Register Now](#)

[Click here to register](#)

When you register you will receive an email confirmation. This email will include instructions on how to join the webinar. Please check your junk mail folder if you don't receive the email shortly.

[Questions and Support](#)

If you have questions or require support, contact:

Stéphanie Romano
stephanie.romano@lhsc.on.ca
519-685-8500, Ext 78990

Michelle Priebe
michelle.priebe@lhsc.on.ca
519-685-8500, Ext. 75621

Please see the attached Webinar Attendee Reference Guide on how to register and join the webinar.

[System Requirements](#)

We recommend you verify that your computer meets the following system requirements.

Windows 7, Vista, XP or 2003 Server
Mac OS X 10.4.11 or newer
iPhone, iPad, Android™ phone or Android"

Download the free GoToMeeting app and attend this webinar from your Apple or Android device.

[Approved CME Hours](#)

This webinar has been approved by SWORBHP for one (1) continuing medical education (CME) point.