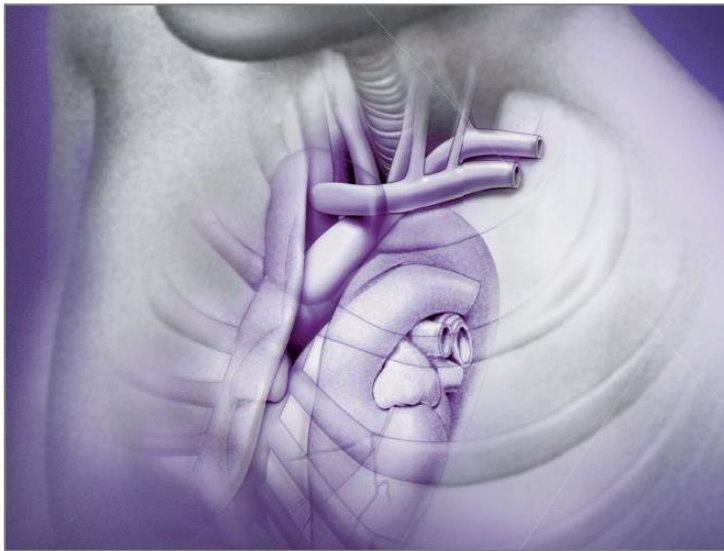


ADVANCED CARDIOVASCULAR LIFE SUPPORT (ACLS) ACLS PROVIDER COURSE

Date: March 22 & 24, 2017 | Time: 8:00-4:00 PM



BRIEF DESCRIPTION:

The Heart and Stroke Foundation is offering an Advanced Cardiovascular Life Support (ACLS) course which builds on the foundation of basic life support (BLS) skills.

It emphasizes the importance of continuous, high-quality CPR and takes healthcare provider training to the next level—highlighting the importance of high-performance team dynamics and communication, systems of care, recognition and intervention of cardiopulmonary arrest, immediate post-cardiac arrest, acute dysrhythmia, stroke, and acute coronary syndromes.

The ACLS Provider course emphasizes 3 major concepts:

- The crucial importance of high-quality cardiopulmonary resuscitation (CPR) to patient survival
- The integration of effective BLS with ACLS interventions
- The importance of effective team interaction and communication during resuscitation

Additional Information:

- Course Fee: \$350 – payable via cheque
Attendees must attend both days (March 22 & 24)
- Lunch (pizza) will be provided

Disclaimer: Attendees must have a current BLS card from the Heart and Stroke Foundation of Canada (HSFC).

 **Register Now**

Click here to register

After you register, the Base Hospital will send you an email confirmation. Make sure you have received this email to confirm your registration as space is limited. Please be sure to check your junk mail folder if you don't receive the email shortly.

 **Location and Maps**

This rounds presentation is being held at:

SWORBHP London Office
4056 Meadowbrook Drive, Unit 145
London, ON N6L 1E5

Find us on Google Maps:

<https://goo.gl/maps/m5YSe3FsDtk>

 **Questions and Support**

If you have any questions, please contact:

Stéphanie Romano
Email: stephanie.romano@lhsc.on.ca
Telephone: 519-685-8500, Ext 78990

Michelle Priebe
Email: michelle.priebe@lhsc.on.ca
Telephone: 519-685-8500, Ext. 75621

 **Approved CME Hours**

This rounds presentation has been approved by SWORBHP for 16 continuing medical education (CME) points.